

ASX

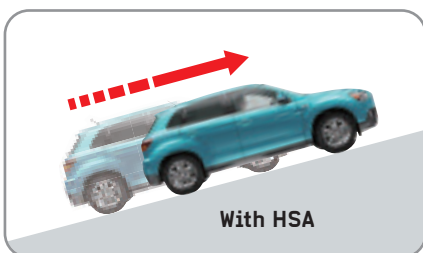




A PERFECT FIT FOR LIFE

The ASX is the brand new vehicle from Mitsubishi designed to fit your life like a glove. Individual, innovative, versatile, capable – it is the smart, efficient new compact crossover with a conscience, and, like so many Mitsubishi models before it, it is the vehicle which will define driving in the next decade. It comes with a choice of two, low-environmental

impact engines – one petrol, one diesel – a choice of two- or all-wheel drive, top-of-the-class safety features, the ClearTec low emissions package including stop-start technology, edgy styling and a nimble drive. It's the brand new car to accommodate your needs and reflect your values, and it's on sale from July 2010.



SO MUCH MORE THAN ABS

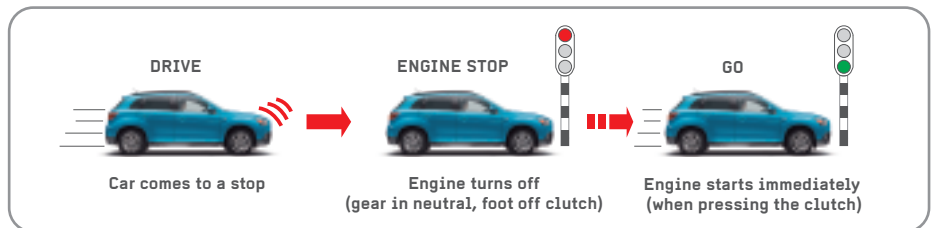
The ASX is a clever car. Take the brakes, for example: ABS of course, complete with EBD which automatically adjusts the loading on individual wheels to accommodate the location of weight. Then there is Brake Assist, providing power assistance to boost braking in an emergency situation, an Emergency Stop signal system, which automatically flashes the hazard warning lights at double speed to warn vehicles around you in such a situation, and Hill Start Assist, which maintains the braking force on a hill for several seconds until the accelerator is applied.



CLEARTEC LOW EMISSIONS PACKAGE

ClearTec is Mitsubishi's collective name for the technological innovations featured in ASX and other Mitsubishi vehicles which result in reduced emissions. On the ASX this includes an alternator Generation Control System, efficient tyres technology and regenerative braking as well as Automatic Stop and Go. Automatic Stop and Go stops the engine when the vehicle is

stationary (subject to certain operating conditions), then restarts it instantly without disrupting the electronic systems, cutting out fuel waste as well as CO₂ emissions. For even greater efficiency a gear indicator, positioned directly between the speedometer and rev counter, recommends the best shift timing for the prevailing driving conditions.



LOW-ENVIRONMENTAL IMPACT ENGINES

The ASX offers a choice of two brand new engines, both of which feature Mitsubishi's clever MIVEC variable valve timing technology which ensures better starting, reduced emissions at lower engine speeds and greater output power at higher ones. Indeed, this is the first time this technology has ever been incorporated into a diesel engine and it makes the 1.8 litre unit notably more refined, as well as improving output, whilst the 1.6 litre petrol engine is one of the cleanest in its class.



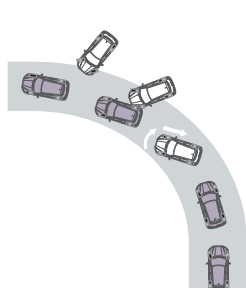
TWO- OR ALL-WHEEL DRIVE

The 1.8 litre diesel engine is mated to a six-speed manual transmission and is available on both standard two-wheel drive and all-wheel drive models, the latter offering two-wheel drive with a selectable four-wheel drive 'on demand' system.



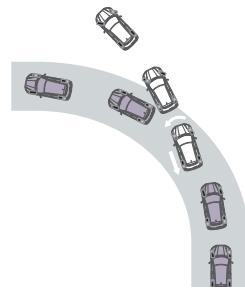
ACTIVE STABILITY CONTROL (ASC) AND TRACTION CONTROL

The Active Stability Control system uses onboard sensors to analyse the vehicle's motion and identify lateral wheel slippage. By governing engine output and applying braking power to the appropriate wheels, ASC helps to maintain stability and control.



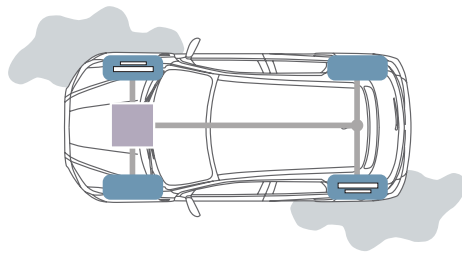
LATERAL REAR-WHEEL SLIPPAGE

Braking force is applied to the outer front wheel to prevent spin-out.



LATERAL FRONT-WHEEL SLIPPAGE

Braking force is applied to the inner rear wheel to prevent front-end drift.



TRACTION CONTROL FUNCTION

When wheel spin is detected, engine output is governed and braking force is applied to the spinning wheels to prevent driving torque loss, for smooth starts and linear acceleration.



5-STAR PASSIVE SAFETY

The ASX's body is engineered to achieve a 5-star rating in the EuroNCAP front impact test using the latest computer dynamic crash analysis, whilst seven airbags provide increased safety to every seat. This includes front, side and driver's knee airbags in the front and curtain airbags for side collision protection.





JUST THE RIGHT STYLE

Sophisticatedly monochromatic, ergonomically designed and generous with equipment: even entry-level ASX models come with manual air conditioning, seven airbags and stability and traction control, whilst those further up the range include climate control air conditioning, cruise control, rain and dusk sensors, satellite navigation, a Bluetooth hands-free 'phone connection, privacy glass, engine stop-start button and full leather upholstery.





JUST THE RIGHT SIZE

With decades of experience in multi-purpose, seven-seater vehicles and as one of the very first manufacturers to utilise greater height in compact cars, Mitsubishi are experts in maximising the use of space, and the ASX is the pinnacle of this expertise. It has a capacious, 442 litre boot with wide opening tailgate and low floor for easy access, as well as a large underfloor tray, 60:40 split folding rear seat backrests with reclining adjustment, armrest with ski slot and an easy-fold to flat facility so that you have the versatility to match your ever-changing demands.

TECHNICAL SPECIFICATIONS

Model	ASX2/3/4* 1.6 Petrol 2WD*	ASX3/4* 1.8 Diesel 2WD	ASX3/4* 1.8 Diesel 4WD
Engine	In-line 4-cylinder 16-valve DOHC MIVEC petrol engine with Auto Stop & Go (AS&G)		
Engine type	In-line 4-cylinder 16-valve DOHC MIVEC petrol engine with Auto Stop & Go (AS&G)	In-line 4-cylinder 16-valve DOHC MIVEC common-rail direct injection diesel engine, turbocharger/intercooler with Auto Stop & Go (AS&G)	
Displacement	cc	1590	1798
Bore/stroke	mm	75.0 x 90.0	83.0 x 83.1
Compression ratio		11.0	14.9 (±1.5)
Max. output	kw (bhp) at rpm	86 (115)/6000	110 (147)/4000
Max. torque	Nm (lb.ft) at rpm	154 (114)/4000	300 (221)/2000-3000
Performance/Fuel Consumption/Emissions			
Maximum speed	mph (kph)	114 (183)	124 (200)
Acceleration			
0-62 mph	secs	11.4	9.7
Fuel type		Petrol	Diesel
Fuel consumption	Urban mode	7.7 (36.7)**	6.7 (42.2)
lts/100km (mpg)	Extra urban mode	5.0 (56.5)**	4.8 (58.9)
	Combined mode	6.0 (47.1)**	5.5 (51.4)
CO ₂ emissions	g/km	138**	145
Chassis/Transmission			
Suspension	Front/Rear	MacPherson strut with stabiliser bar / Multi-link with stabiliser bar	
Brakes	Front/Rear	Ventilated disc / Solid disc	
		ABS with EBD, ESS (Emergency Stop signal System) and BA (Brake Assist)	
Wheels/tyres		16" x 6.5J alloy 215/65R16	17" x 6.5J alloy 215/60R17
Transmission		Manual - 5 speed	Manual - 6 speed
			Manual - 6 speed On-demand 4WD system with mode selector
Dimensions			
Exterior l x w x h	mm	4295 x 1770 x 1615	4295 x 1770 x 1615
Track Front/Rear	mm	1525/1525	1525/1525
Wheelbase	mm	2670	2670
Weights/Volumes			
Fuel tank cap.	lts (imp.galls)	63 (13.9)	60 (13.2)
Gross vehicle weight	kg (lbs)	1870 (4123)	2060 (4542)
Kerb weight	kg (lbs)	ASX2: 1270 (2800) ASX3/4: 1290 (2844)	1460 (3219)
Servicing/Insurance/Warranty			
Service intervals		Every 12,500 miles or 12 months, whichever occurs first	Every 9000 miles or 12 months, whichever occurs first
Insurance group (50 Group Rating)		ASX2/3: 13 / ASX4: 14	ASX3/4: 19
Warranty		ASX3: 19 / ASX4: 20 3 year unlimited mileage warranty, 12 year anti-corrosion perforation warranty, 3 year pan-European roadside, home and accident assistance	

*Petrol and ASX4 models on sale September 2010.

**Fuel consumption and CO₂ emissions figures for 1.6 petrol model are subject to confirmation.

The fuel consumption figures quoted are those produced under Government regulations for the purpose of comparing new cars. They should not be regarded as a representation of achievable fuel consumption, which in practice will vary with load, road conditions, driving style and other factors.

MITSUBISHI MOTORS RECYCLING

We all have a duty to protect the environment. After a long working life we will take back any Mitsubishi Motors vehicle originally sold by The Colt Car Company Ltd. and recycle it in an environmentally friendly manner in accordance with the EU Directive on End-of-Life Vehicles and any applicable national statutory provisions.

All Mitsubishi Motors vehicles sold by The Colt Car Company Ltd., irrespective of date of sale, will be taken back free of charge from the last owner, at one of the designated take-back points, provided the vehicle contains all major components and is free of waste.

For further information please visit www.cartakeback.com, email info@cartakeback.com or call the Cartakeback info-line on 0845 257 32 33.

The specification of the vehicles illustrated in this publication may not be applicable to the UK market, furthermore some vehicle illustrations may include accessory items which are not part of UK standard specification. However, every effort has been made to ensure that the written information was accurate, up-to-date and consistent with UK specification at the time of going to press. The right is reserved to change specification, features and prices without prior notice. To avoid any misunderstandings, your Mitsubishi Motors dealer will advise of any alterations made since the date of issue of this brochure. No part of this publication may be reproduced in any form or by any means, without the prior written permission of The Colt Car Company Limited.

Head Office: The Colt Car Company Ltd., Watermoor, Cirencester, Glos. GL7 1LF
Tel: 01285 655777 Website: www.mitsubishi-cars.co.uk

This brochure has been produced by an ISO14001 environmentally accredited printer where all processes are managed and materials recycled. The paper used to produce this brochure is from sustainable forests, chlorine free and from an ISO14001 accredited mill. This brochure is fully recyclable.

ASX05911 04/10

KEY FEATURES

ASX2 MODELS

- Auto Stop & Go (AS&G)
- Anti-lock Braking System with EBD, ESS & BA
- Mitsubishi Active Stability and Traction Control (M-ASTC)
- Hill Start Assist
- Dual front, side, curtain and driver's knee SRS airbags
- Alarm with keyless entry
- 16" alloy wheels
- Air conditioning - manual
- Electric windows and heated folding door mirrors
- Steering wheel tilt and reach adjustments
- Height-adjustable driver's seat
- Multi-Information Display (MID)
- Radio/CD/MP3 player with 4 speakers
- Audio jack

ASX3 MODELS - AS ABOVE PLUS:

- 17" alloy wheels
- Privacy glass
- Front fog lamps
- Rear parking sensors
- Front grille chrome surround
- Side window chrome beltline
- Keyless operation system with engine start button
- Air conditioning - climate control
- Cruise control
- Heated front seats
- Leather steering wheel with remote audio control
- Leather gearshift knob
- Hi-contrast meter dials with colour LCD MID
- Bluetooth hands-free telephone kit
- Radio/CD/MP3 player with 6 speakers
- Auto-light control
- Rain sensor
- 4WD models: Rotary drive mode selector

ASX4 MODELS* - AS ABOVE PLUS:

- Leather seat trim
- Kenwood satellite navigation system
- Reversing camera
- iPod control

EXTERIOR COLOURS

ALL MODELS

1 Cool Silver (M)	A31
2 Kingfisher Blue (M)	D17
3 Orient Red (M)	P26
4 Atlantic Grey (M)	U17
5 Amethyst Black (P)	X42
6 Polar White (S)	W19

M : Metallic* P : Pearlescent* S : Solid
Colours and trims reproduced on these pages may vary from the actual colours due to the limitations of the printing process used.

* Metallic/pearlescent paint finish available at additional cost.